

Technical Report 2006-06

Juvenile Pacific Salmon and the Nearshore Ecosystem of Puget Sound

Prepared in support of the Puget Sound
Nearshore Partnership

November 2006

Kurt L. Fresh
NOAA Fisheries, NWFSC

PUGET SOUND
NEARSHORE
PARTNERSHIP



RESTORING OUR
ECOSYSTEM HEALTH



Technical subject matter of this document was produced by the Puget Sound Nearshore Partnership, which is entirely responsible for its contents. Publication services were provided by the U.S. Army Corps of Engineers, with financial support from Washington Department of Fish and Wildlife. This document may be freely copied and distributed without charge.

Acknowledgements

The editorial assistance and oversight by M. Dethier producing this (and all other) White Papers are greatly appreciated. The comments of S. Simenstad and W. Graeber on drafts of the White Paper were invaluable.

Recommended bibliographical citation:

Fresh, K.L. 2006. Juvenile Pacific Salmon in the Nearshore Ecosystems of Washington State. Puget Sound Nearshore Partnership Report No. 2006-06. Published by Seattle District, U.S. Army Corps of Engineers, Seattle, Washington. Available at: <http://www.pugetsoundnearshore.org>

Cover Photo: Juvenile Chinook salmon fry (left) and juvenile chum salmon (right). Photographs courtesy of K. Fresh.

Contents

Preface	1
Executive Summary.	2
Introduction	4
Habitat Use.	5
Nearshore Habitat Requirements.	9
Distribution, Status and Trends	12
Human Impacts	15
Structure and Function	17
Gaps/Critical Uncertainties	19
Literature Cited	19

Preface

Of the many organisms that inhabit the Puget Sound, Pacific salmon are the species most identifiable with this region. They have been important to the culture, economy, commerce, and way of life of people of the region for thousands of years. As early as people walked this land, salmon was undoubtedly an important food source because of its abundance and wide distribution. The return of the salmon to streams was a cause of celebration and ceremony by native peoples because it meant a major source of food had been renewed for yet another year. Salmon was also an important symbol that was regularly incorporated into regional art.

Salmon rapidly became important to the Europeans that settled in this area as a food source and a major economic force that was commercially and recreationally harvested. Puget Sound salmon were caught and continue to be caught by a plethora of commercial fisheries in all marine waters of the state. Salmon are commercially harvested by native peoples and non-Indians as well. Commercial fisheries for salmon support many jobs involved in the catching, marketing, and sales of salmon and are a major source of income for many native American tribes of the Pacific Northwest.

In addition to being good to eat, salmon were fun to catch with a hook and line. This resulted in a robust recreational industry for salmon throughout Puget Sound and the Washington coast. People come from all over the world to catch Puget Sound salmon. For example, when the sockeye salmon fishery in Lake Washington is open, thousands of boats can be counted on the water of this one urban lake at one time, all fishing for sockeye salmon. Like commercial fishing, recreational fishing has economic benefit beyond simply the angler. Fisherman must buy tackle, boats and other equipment, stay in hotels, and drive to where they will fish. Many communities, especially along the coast of Washington, have been largely supported by commercial and recreational salmon fishing.

Other non-consumptive uses of salmon developed as well. For example, many people simply enjoy viewing salmon as they migrate through such places as the Ballard Locks and spawn in the Cedar River near Seattle. In the Skagit River, people boat the river simply to watch the eagles feed on the chum salmon that have returned to spawn. Salmon became a vehicle to educate children about nature and the place they live.

As our commercial and recreational use of the salmon resource expanded, our need to learn more about this creature increased. We now know much about the ecological significance of salmon. Many scientists regard salmon as a keystone species and an indicator of the condition of many of our northwest ecosystems. At any one time, salmon occupy multiple trophic levels in the Puget Sound food web and are critical to the movement of nutrients and organic matter in and around Puget Sound. At the same time of year, some Chinook salmon are eating insects in a marsh, some are eating small fish in shorelines areas, and some are eating even larger fish. In addition, Chinook salmon are eaten by hundreds of other species that inhabit Puget Sound. For example, sub-adults and adults are eaten by orcas and the condition of Chinook populations is critical to the status of some orca populations in this region (see Orca White Paper, this series). In recent years, we have also discovered that salmon move nutrients from marine waters to freshwater, helping sustain these freshwater ecosystems. Salmon carcasses act as fertilizer for vegetation around streams and lakes and are used directly or indirectly as food by rearing juvenile salmon. Thus, the condition of succeeding generations of some salmon populations depends upon abundance levels of returning adults.

Executive Summary

Puget Sound salmon (genus *Oncorhynchus*) spawn in freshwater and feed, grow and mature in marine waters. During their transition from freshwater to saltwater, juvenile salmon occupy nearshore ecosystems in Puget Sound. This period of nearshore residence is critical to the viability, persistence, and abundance of Puget Sound salmon. Thus, restoring and protecting nearshore habitats important to juvenile salmon must be a part of efforts to rebuild depleted salmon runs throughout this region. The primary objective of this report is to summarize what we know about salmon use of nearshore habitats to aid efforts protecting and restoring nearshore habitats.

Five species of Pacific salmon spawn and rear in Puget Sound. Use of nearshore ecosystems varies considerably between and within species. The concept that not all salmon use nearshore ecosystems in the same way is fundamental to the planning, implementation, and monitoring of protection and restoration actions directed at salmon. This report focuses on naturally produced juvenile Chinook salmon and juvenile chum salmon because these two species make the most extensive use of nearshore habitats.

For each species of salmon, use of nearshore habitats varies with scale. Two important scales of variation in habitat use are *population* (i.e., within species) and *life history strategy* (i.e., within population). Populations are subspecies units that refer to geographically discrete, semi isolated breeding units of salmon. Populations differ in their use of nearshore habitats because of the specific conditions (e.g., differences in flow regimes, temperature regimes, and migration distances) each encounters.

Populations are aggregated by the NOAA Fisheries into groups called Evolutionarily Significant Units (ESUs) that are the units used to make decisions about status under the Endangered Species Act (ESA). Two groups of Puget Sound salmon populations were listed as threatened under the ESA. The 22 populations of Chinook salmon spawning within Puget Sound east of the Elwha River were grouped into one ESU and listed as threatened in 1999. In addition, two populations (consisting of eight sub-populations) of chum salmon spawning in Hood Canal and the eastern Strait of Juan de Fuca during the summer and early fall (termed summer

chum) were also grouped into an ESU and listed as threatened in 1999.

The second scale of variability important to understanding juvenile salmon use of nearshore ecosystems is the life history strategy of the fish. Individuals within a population vary in habitat use based upon such factors as where within the watershed they come from, spawning timing, climate, and abundance. Although life history variation occurs along a continuum, individuals within a salmon population can be aggregated into a more discrete number of life history strategies. In Puget Sound, juvenile Chinook salmon have been aggregated into four general life history strategies, referred to as migrant fry, delta fry migrants, parr migrants, and yearlings, based upon when the fish leave freshwater and their size at this time.

The first juvenile Chinook salmon to arrive in estuaries are fry (< 50 mm fork length (FL)) which enter natal deltas between December and April. Some of the fry pass quickly through the natal delta (the migrant fry strategy) and enter Puget Sound, spending only days in natal deltas. Other fry (the delta fry strategy) remain in natal deltas for extended periods of up to 120 days where they make extensive use of small (1st or 2nd order), dendritic tidal channels (channels that end in the upper end of the marsh) and sloughs in tidal wetlands.

During the late spring, fish associated with two other life history strategies (parr migrant and yearling) leave freshwater rearing habitats and migrate downstream to the estuary. Most parr migrants and yearlings arrive in the delta from May to mid July. Residence time and migration timing from the natal delta into Puget Sound habitats is a function of a number of factors. In particular, with the exception of the migrant fry strategy, fish size at the time the fish arrive in the delta and residence time in the delta tend to be inversely related. Environmental conditions, especially increasing water temperatures, may also be an important determinant of when juvenile Chinook salmon leave delta habitats.

Once juvenile Chinook salmon leave estuarine/delta habitats and enter Puget Sound, they distribute widely throughout nearshore ecosystems. Their abundance in shoreline areas of Puget Sound typically peaks in June and July, although some are still present in shoreline habitats through at least October. As the fish increase in size, the depth of the water and diversity of habitats they use changes. Optimal conditions for smaller juvenile

Chinook salmon (< 70 mm) in estuarine areas appears to be low gradient, shallow water, fine-grained substrates (silts and mud), low salinity, and low wave energy. With increasing size, juvenile Chinook salmon use a greater diversity of Puget Sound habitats including deeper, more offshore habitats and eventually most fish leave for North Pacific Ocean feeding grounds.

Within Puget Sound watersheds, we have not yet identified discrete life history strategies for chum salmon populations. Most chum salmon fry leave freshwater within one or two days of emergence and emergence can occur as early as December. These early emerging fish are likely summer run chum salmon with later emerging members belonging to other races. Most available information on chum salmon does not distinguish use based upon race (i.e., it is not specific to summer chum salmon). The timing of when chum salmon enter nearshore ecosystems should affect some aspects of habitat use such as diet, residence time, growth rates, and so on simply because the condition of nearshore ecosystems is not the same for early and late migrants.

Chum salmon fry can either pass directly through natal estuaries into Puget Sound or they can rear for weeks in estuarine habitats before moving into shoreline areas. Juvenile chum salmon often occur in non-natal estuaries. Migration rates of chum salmon in nearshore areas depend upon such factors as fish size, foraging success, and environmental conditions (currents). Habitat use appears to be strongly size dependent. Small chum salmon fry (< 50-60 mm) tend to migrate along the shoreline in shallow water < 2 m in depth. As chum salmon fry increase in size to > 60 mm they expand the habitats they use to include nearshore surface waters. Chum salmon abundance in nearshore areas peaks in May and June. Abundance after June declines significantly as chum salmon move further offshore and migrate out of Puget Sound, although some are still found in nearshore areas through October.

The ability of nearshore ecosystems to support or promote salmon population viability is a function of the biological, physical and chemical characteristics of the habitats used by juvenile salmon. Habitat function depends upon both local attributes and the context of that habitat within the “bigger picture” of the surrounding larger ecological systems it is nested within (referred to as landscape attributes); landscape attributes include the arrangement of habitats, habitat shape, location and connectivity. The ability of nearshore habitats to support salmon population viability is a function of how well the

habitat supports: 1) feeding and growth, 2) avoidance of predators, 3) the physiological transition from freshwater to saltwater, and 4) migration to ocean feeding habitats. In general, our ability to quantitatively or conceptually link nearshore habitat characteristics to functions of that habitat for juvenile salmon (i.e., salmon performance) varies considerably with species and habitat type. This reflects the complexity of the salmon life cycle and the fact that the habitat requirements of salmon can vary broadly as a function of many factors including specific location of that habitat, time of year, species, population, size of salmon, and life history strategy. For example, our ability to link nearshore habitat characteristics to functions of that habitat to support juvenile Chinook salmon is strongest in natal deltas and weakest along shorelines.

Humans can impact the functioning of nearshore habitats for juvenile salmon in many ways. A Conceptual Model developed by the Nearshore Science Team (Simenstad et al. 2006) was used to explore the relationships between human actions (including restoration actions), ecosystem processes, habitat, and function (in this case support of juvenile salmon). Lessons learned from applying this conceptual model to several scenarios involving juvenile salmon revealed that a scenario needs to be created that answers a number of questions including:

1. What species, life history strategy, and size class is being considered?
2. What habitat type is being affected (e.g., eelgrass bed vs. tidal channel)?
3. Where in Puget Sound the action is occurring?
4. What type of action is being considered (e.g., dike breaching vs. armoring)?
5. What constraints such as geomorphologic context exist?

If such scenarios can be devised, then we can more directly explore how an action may affect salmon population viability, identify possible outcomes of an action, define key uncertainties, and help assess potential risks.

Introduction

Puget Sound salmon (genus *Oncorhynchus*) are anadromous, meaning that they spawn in freshwater and feed, grow, and mature in marine waters. Five species of Pacific salmon use the nearshore ecosystems of Puget Sound – Chinook (*Oncorhynchus tshawytscha*), coho (*O. kisutch*), chum (*O. keta*), pink (*O. gorbuscha*), sockeye (*O. nerka*). Because Pacific salmon are anadromous, they occupy a landscape of thousands of square miles that ranges from the mountainous, snow fed streams where the fish spawn to the vast, open Pacific Ocean where they feed and grow.

Thus, the condition of salmon populations does not depend upon use of a single habitat type but rather upon use of the full range of habitats available to the fish during their entire life cycle (Bottom et al. 2005b), including habitats associated with nearshore ecosystems. A growing body of evidence demonstrates that the time salmon spend in nearshore ecosystems and the quantity and quality of nearshore habitats available are important to the viability of salmon populations (Carl and Healey 1984; MacDonald et al. 1988; Mortensen et al. 2000; Magnusson and Hilborn 2003; Greene and Beechie 2004; Bottom et al. 2005a, b; Greene et al. 2005).

Viability is a relatively new conceptual approach to Pacific salmon management being used by NOAA Fisheries to evaluate recovery of salmon populations. Viability refers to the ability of populations to persist over long time scales (McElhany et al. 2000) and is used to evaluate their status and condition. Viability is viewed from the perspective of extinction risk; viability increases as the risk of extinction declines. NOAA Fisheries identified four characteristics of populations that should be used to evaluate viability (McElhany et al. 2000): abundance, productivity, spatial structure and diversity. All four of these parameters are critical to the viability of salmon populations, all are interrelated, and levels of all four attributes in aggregate characterize extinction risk. For example, while the abundance levels of a population are still important, where that abundance is in space and time and what the abundance is composed of (e.g., ages and sizes) are also important.

Along the west coast of North America, the abundance levels of many populations of Pacific salmon are at critically low levels (Nehlsen et al. 1991; Stouder et al. 1997; McClure et al. 2003). Large scale efforts to recover these populations are underway throughout the

region. A growing body of evidence suggests that restoring and protecting nearshore habitats must be considered a part of efforts to rebuild salmon runs throughout this region (MacDonald et al. 1988; Magnusson and Hilborn 2003; Greene and Beechie 2004; Bottom et al. 2005b; Greene et al. 2005). The Puget Sound Technical Recovery Team recognized this body of evidence in developing technical guidance for watershed and nearshore recovery groups to develop recovery plans (available at: <http://www.nwfsc.noaa.gov/trt/puget/pstrtwatershedguidance.pdf>). Recovery of nearshore ecosystems is also an explicit part of salmon recovery efforts identified in the recently completed draft salmon recovery plan for Puget Sound (e.g., Shared Salmon Strategy 2005 available at <http://www.sharedsalmonstrategy.org/plan/index.htm>).

Although nearshore ecosystems are important to recovery of salmon populations, it is clear that in order to successfully rebuild depressed salmon populations, we must consider how they use the entire landscape available to them and address the full range of problems they face over this landscape. Thus, the condition of spawning areas, other freshwater and marine rearing areas, and migratory corridors must be addressed. Fish from spawning areas must have habitats available to occupy once they emerge from the gravel and begin their long journeys to the sea and back again. How to best restore and protect nearshore habitats to support salmon recovery is (and will continue to be) an evolving process. The intent of this report is to summarize what we know about salmon use of nearshore habitats to aid efforts protecting and restoring nearshore habitats.

Habitat Use

Each salmon species employs a fundamentally different approach in how they use freshwater, marine and nearshore landscapes. For example, juvenile sockeye salmon rear extensively in lakes, coho rear for at least one year in streams, and pink and chum salmon do not rear in freshwater. The concept that salmon vary in their use of habitats is fundamental to the planning, implementation, and monitoring of protection and restoration actions directed at salmon. This document will focus primarily on habitat use and nearshore requirements of juvenile Chinook salmon and juvenile chum salmon because these two species make the most extensive use of nearshore habitats.

While species-specific differences in habitat use by salmon have long been appreciated, our understanding of the significance of variability in habitat use at other scales (e.g., within a species) is more recent. This report focuses on two scales of variability in nearshore habitat use of juvenile salmon. The first scale of variation is the population level. Populations are geographically discrete, self-perpetuating, and semi-isolated (in terms of genetic exchange) reproductive or breeding units (Rich 1939). Each population exhibits a range of meristic characteristics, behaviors, and inherent capabilities that are defined by the longterm legacy of the particular set of conditions the fish experience during their life histories including climate, instream flow conditions, temperature regimes, stream size, substrate attributes, and ocean conditions. In other words, populations adapt to more effectively utilize the long term environmental regime they experience (Waples et al. 2001). Thus, each population encounters different conditions during their life histories which can result in differences in habitat use (e.g., when the fish arrive at a particular habitat type, size at arrival, the specific habitats used, and how long they reside in a habitat). For example, juvenile salmon entering Puget Sound from the Nisqually River encounter different environmental conditions, predators, and food items than fish entering from the Nooksack River.

Groups of populations can also be aggregated or grouped into larger clusters. One approach has been to group populations into what are referred to as metapopulations which are groups of populations where significant genetic exchange is occurring (Hanski and Gilpin 1996). NOAA Fisheries has used the concept of metapopulations to develop an approach for applying the

Endangered Species Act (ESA) to salmon. Their approach aggregates populations into ESUs (Evolutionarily Significant Units) (Waples 1995) that are the basic units of assessment used to implement the ESA. The loss or endangerment of an ESU is considered significant to the evolutionary persistence of a species.

Another scale of variability in nearshore habitat use is the sub-population level. Variability within populations is reflected as variability or diversity in a wide variety of traits including body size, fecundity, timing of life history events, location of spawning, residence time in various habitats, size at age, age at maturity, ocean distribution, and physiological characteristics (Healey and Heard 1984; Levings et al. 1986; Taylor 1990; Quinn and Unwin 1993; NRC 1996; Miller and Sadro 2003). Some of these traits are genetically based, others result from a combination of genetic and environmental factors, and others can result from genetic drift (Taylor 1991; Hansen and Jonsson 1991; Stearns 1992; Gharrett and Smoker 1993; Quinn et al. 2000; Waples et al. 2004; Beechie et al. 2006). Diversity can be affected by a variety of natural and anthropogenic factors including habitat changes, harvest practices and hatchery practices (NRC 1996; Quinn et al. 2002; Cucherousset et al. 2005; Beechie et al. 2006).

Although life history variation occurs along a continuum, it is convenient from an analytical perspective to define a more limited number of discrete life history strategies (Reimers 1973; Carl and Healey 1984; Wissmar and Simenstad 1998; Beamer et al. 2005). For this report, I have adopted Beamer et al.'s (2005) life history classification scheme for Skagit River Chinook salmon which distinguishes four strategies based upon the size of the fish at the time they emigrate from freshwater, when the fish leave freshwater, and how they rear in freshwater and nearshore habitats:

1. Fry migrants – generally spend a short time in freshwater after hatching (between 1-10 days) and then rapidly migrate through the natal estuary/delta into Puget Sound. As a result, these fish are < 50 mm at the time they leave their natal freshwater system. Fry migrants rear in a diversity of habitats in the nearshore regions of Puget Sound.
2. Delta fry migrants - similar freshwater residency to fry migrants except delta fry remain in natal delta habitats to rear for extended periods (weeks

-
- to months). This life history type is also small sized (<50 mm) when entering the natal estuary.
3. Parr migrants - remain in freshwater and rear for up to 6 months before migrating to the estuary. Fish of this life history type are larger in size (generally > 70 mm) at the time they enter their natal estuary,
 4. Yearlings - rear in freshwater for at least one year before migrating to Puget Sound. Fish from this life history type spend only a short period of time in natal deltas and are larger than other life history strategies at the time they leave freshwater.

While all life history strategies appear to occur in all Puget Sound Chinook salmon populations (see Shared Strategy Salmon Recovery Plan (2005) chapters for individual watersheds), the mix or relative proportion of these strategies varies between populations and between years within populations. Most Puget Sound Chinook salmon populations are comprised (on average) of the parr migrant and delta fry strategies, although several populations are predominantly yearlings. The distribution of life history strategies reflects variability in the relative survivals between the ocean (fry and parr) and stream type (yearlings) components within the population. Although chum salmon populations can be disaggregated into different life history strategies, such an analysis has not been conducted. Accordingly, discussions of nearshore habitat use by juvenile chum salmon will focus at the racial and ESU scales.

The focus of this report is on use of the nearshore ecosystems by naturally produced juvenile Chinook salmon and juvenile chum salmon. Our understanding of how these two species use nearshore ecosystems has been shaped by two important factors. First, hatchery fish have been used for well over 100 years to supplement and enhance native populations and mitigate for habitat loss. In addition to being a source of the decline of some populations, hatchery and naturally produced fish likely differ in how they use nearshore ecosystems (Fresh 1997). Because our ability to distinguish naturally-produced and hatchery produced fish in the field has been limited until recently, much of what we have learned about salmon may apply primarily to hatchery fish and not wild fish. Second, our understanding of salmon habitat use has been shaped by the condition of the habitats we are studying and the populations that use them. For example, a major factor affecting the number and type of life history strategies

present within a population will be the distribution and quality of habitats that can potentially be used (NRC 1996). If the habitats do not exist or have been significantly altered because of either natural or anthropogenic factors, then population members cannot use them and distinct life history strategies can potentially be eliminated from the population (Bottom et al. 2005b).

Chinook Salmon. Each life history strategy uses nearshore habitats in different ways that are primarily determined by the time and size of migration from freshwater. Chinook salmon emerge from incubation gravels from approximately December to April. Upon emergence, fry can vary widely in how long they stay in freshwater and where they are found. Juvenile Chinook salmon enter natal deltas from December to at least September. The timing of estuarine entry depends upon such factors as population of origin, life history strategy, where spawning occurred (e.g., a head water stream versus a mainstem stream), when the eggs were deposited, flow levels, oxygen levels, and water temperature.

The first juveniles that arrive in the natal estuary are fry (< 50 mm). Fry can adopt one of two general behaviors. First, some pass directly through the natal delta (the migrant fry strategy) and enter Puget Sound, spending only days in natal deltas. These fish then rear throughout the nearshore regions of Puget Sound before leaving Puget Sound. One of the habitats that migrant fry use are the connected lagoons and small stream mouths along the shore of Puget Sound. These types of systems are referred to as “pocket estuaries” (Beamer et al. 2003). Densities of migrant fry in pocket estuaries in winter and early spring are typically greater than in adjacent nearshore intertidal habitats suggesting that these habitats are important to this life history strategy (Beamer et al. 2005). Wind and tidal currents probably play a major role in distributing fry migrants from the natal delta to shoreline areas where they can encounter pocket estuaries.

Second, some fry remain in natal deltas (the delta fry strategy) where they rear for extended periods of up to 120 days (e.g., Simenstad et al. 1982; Beamer et al. 2005). Fry are distributed within deltas by a combination of tidal and fluvial processes, which depend upon the fundamental form and

geomorphology of each system and such factors as river outflow and tidal prism. Small (1st or 2nd order), dendritic tidal channels (channels that end in the upper end of the marsh) found in wetland areas and sloughs in all zones of the estuary are important rearing habitats for Chinook salmon fry (Healey 1980; Congleton et al. 1981; Levy and Northcote 1982; Levings et al. 1986, 1991; MacDonald et al. 1987; Shreffler et al. 1990; Miller and Simenstad 1997; Gray et al. 2002; Beamer et al. 2005). However, because many of these tidal channel networks dewater at lower tides, availability and characteristics of low tide refuges are also important factors for these fish in deltas.

During the late spring, parr migrants and yearlings leave freshwater rearing habitats and migrate downstream to the estuary. Arrival of parr migrants in the delta generally is from May to mid July, although small numbers of parr can be found migrating downstream throughout most of the summer in some years (D. Seiler, Washington State Department of Fish and Wildlife, personal communication). In the estuary, migrant parr and yearlings mix with delta fry. Residence time of juvenile Chinook salmon in natal deltas and when the fish leave these systems is a function of a number of factors. In particular, fish size at the time the fish arrive in the delta and residence time in the delta are inversely related (Healey 1980, 1982). Thus, the delta fry strategy has the longest residence time in the delta and yearlings the shortest. Environmental conditions, especially water temperatures, may also be an important determinant of how long Chinook salmon stay in delta habitats and when they leave. Water temperatures in delta habitats, especially the shallow water areas associated with the dendritic channel systems, will eventually warm to $> 15^{\circ}\text{C}$ in most years. As temperatures increase beyond this level, they become increasingly stressful to the fish and affect habitat use (e.g., they may avoid use of the tidal marsh systems and instead use deeper refuge areas in larger channels or leave the delta altogether).

Once juvenile Chinook salmon leave estuarine/delta habitats and enter Puget Sound, they distribute widely and probably can be found along all stretches of shoreline at some point during the year. Recent data from coded wire tag recoveries of hatchery juvenile Chinook salmon (Brennan et al. 2004; Fresh

et al. 2006) suggest that some fish from each population may distribute broadly within Puget Sound before leaving. Juvenile Chinook salmon abundance in shoreline areas of Puget Sound typically peaks in June and July (Stober and Salo 1973; Fresh et al. 1979), although some are present in shoreline habitats through October (Stober and Salo 1973; Fresh 1979; Fresh et al. 2006). Once in Puget Sound, different life history strategies and different populations mix. At this time, we do not know if habitat use in Puget Sound differs among life history strategies (other than pocket estuary use by migrant fry). It is probable that Chinook salmon juveniles of a similar size occurring in the same place at the same time use the available habitat in the same way and have similar growth rates and diet, regardless of their origin or life history strategy.

As juvenile Chinook salmon grow and increase in size, the depth of the water and diversity of habitats they use expands (Healey 1980, 1982; Levy and Northcote 1982; Simenstad et al. 1982; Levings et al. 1986; Duffy 2003; Miller and Sadro 2003). Optimal conditions for smaller juvenile Chinook salmon ($< 70\text{ mm}$) in estuarine areas appear to be low gradient, shallow water, fine-grained substrates (silts and mud), low salinity, and low wave energy (Healey 1980; Levings et al. 1986; Simenstad 2000). With increasing size, juvenile Chinook salmon move into deeper, more offshore habitats. It is not clear whether they change habitats abruptly (e.g., at a transitional size) or more gradually (e.g., they simply increase the amount of time they spend in a broader array of habitats).

Chum Salmon. Within Puget Sound watersheds, most chum salmon fry leave freshwater within one or two days of emergence so emergence timing provides an accurate estimate of timing of estuarine entry (Salo 1991). Chum salmon fry begin emerging in December. Early emerging chum salmon are likely summer run fish (adults enter freshwater in summer and early fall) with later emerging members belonging to other races (fall and winter), although the division between emergence of summer and fall chum salmon fry is still unclear. Although we know a lot about use of Hood Canal nearshore habitats by juvenile chum salmon, most available information does not distinguish use based upon race (i.e., it is not specific to summer chum salmon). We should expect that the timing of chum salmon entry into

nearshore ecosystems to affect some aspects of habitat use such as diet, residence time, and growth rates because the condition of nearshore ecosystems is not the same for early and late migrants (Simenstad et al. 1980).

Studies in Hood Canal and elsewhere (e.g., Snohomish River estuary) demonstrate that chum salmon fry either pass directly through natal estuaries into Puget Sound or they can rear for weeks in estuarine habitats before moving into shoreline areas (Stober and Salo 1973; Healey 1979; Salo et al. 1980; Levy and Northcote 1982; Simenstad et al. 1982). Dispersal of fish from natal estuaries probably depends upon a number of factors such as geomorphology of the estuary, freshwater outflow, and water circulation patterns within the receiving environment (e.g., Hood Canal). As with Chinook salmon, juvenile chum salmon can distribute widely from natal estuaries (Bax 1983) and occupy non-natal estuaries during their migration from Puget Sound (E. Beamer, personal communication, Skagit River System Cooperative). For example, Bax (1983) found that at least 25% of hatchery chum salmon juveniles that were released north of the Skokomish River moved back onto the Skokomish delta and were still present there four days after release.

Migration rates of chum salmon in nearshore areas are variable and depend upon fish size, foraging success, and environmental conditions (currents and prevailing winds). Small chum salmon fry (< 50-60 mm) appear to migrate primarily along the shoreline in shallow water < 2 m in depth (Healey 1979; Simenstad et al. 1982). Use of shallow water habitats relates to predator avoidance and prey availability. When present in shallow water habitats juvenile chum salmon < 60 mm consume primarily epibenthic invertebrates, particularly harpacticoid copepods and gammarid amphipods. These epibenthic prey are primarily associated with protected, fine grained substrates and often times eelgrass (Healey 1979; Simenstad et al. 1982) and are especially abundant early in the year in some locations (e.g.; Thom et al. 1989). This suggests that these habitat types are especially important to small, early migrating chum salmon, some of which are presumably summer chum salmon. As chum salmon fry increase in size to > 60 mm, their habitat use expands to include neritic or nearshore surface waters, possibly to take advantage of alternate prey resources found in these habitats (e.g., Healey 1979; Healey 1982; Simenstad et al. 1982; Simenstad and Wissmar 1985).

Chum salmon abundance in nearshore areas peaks in May and June when chum salmon juveniles can be found distributed widely throughout Puget Sound (e.g., Fresh et al. 1979; Salo et al. 1980; Duffy 2003; Brennan et al. 2004; Fresh et al. 2006). Abundance after June declines significantly as chum salmon move further offshore and migrate out of Puget Sound. Small numbers of juvenile chum salmon are, however, still found in nearshore areas until at least October (Fresh et al. 2006).

Nearshore Habitat Requirements of Juvenile Salmon

The ability of nearshore ecosystems to support or promote salmon population viability is a function of the biological, physical and chemical characteristics of the habitats used by the juvenile salmon. These habitat characteristics or attributes can be evaluated at multiple spatial and temporal scales. Historically, nearshore habitats have been viewed primarily at site or patch scales (e.g., area of a marsh, substrate composition, and channel depth). In recent years, the concepts of landscape ecology (e.g., Turner 1989) have been increasingly applied to evaluating salmon habitat (Simenstad 2000; Simenstad et al. 2000; Hood 2002). A landscape view of salmon habitat proposes that the function of any unit of habitat depends upon both local attributes and the context of that habitat within the “bigger picture” of the surrounding habitat, including

such things as the arrangement of habitats, habitat shape, location of the habitat, and connectivity to other habitats. An example of the effect of one landscape factor is connectivity. Beamer et al. (2005) suggested that connectivity of habitat or the length, condition and complexity of pathways fish followed between habitats affected their importance to juvenile Chinook salmon. For instance, juvenile Chinook salmon were less abundant in dendritic tidal channel systems as distance from the main distributary channels increased.

Fundamentally, the level of habitat function depends upon how accessible the habitat is and its quality. Accessibility of habitat relates to the ability of the fish to find and then use the habitat. Simenstad (2000) and Simenstad and Cordell (2000) used the term opportunity to refer to habitat attributes that affect the ability of juvenile salmon to “access” habitat. Examples of opportunity attributes include tidal elevation,

Table 1 Nearshore habitat attributes important to juvenile salmon, the scale that each attributes operates, and whether they affect capacity, opportunity, or both. The table is not intended to be comprehensive but rather illustrate types of attributes important in recovery planning. Further, attributes were included where data existed that explicitly linked the habitat to juvenile salmon performance, or where a strong conceptual linkage could be made.

Habitat		Scale		Type of Attribute	
Type	Attribute	Local	Landscape	Opportunity	Capacity
Water Characteristics	Temperature	X		X	X
	Salinity	X	X	X	
	River flow	X	X	X	
	Dissolved Oxygen	X		X	X
	Tidal Currents	X	X	X	
	Turbidity	X		X	X
Physical Characteristics	Sediment Composition	X			X
	Sediment Depth	X			X
	Water Depth	X		X	
	Habitat Size		X		X
	Shape		X		X
	Connectivity	X	X		X
	Water Volume	X		X	
	Drainage Area		X	X	
	Vegetation Composition	X	X		X
	Vegetation Height	X			X
Biological Characteristics	Prey Abundance	X	X		X
	Prey Composition	X	X		X
	Predator Abundance	X			X
	Exotic Species	X			X

hydrodynamic processes that disperse fish, and temperature (Bottom et al. 2005a) (Table 1). Habitat quality, or what Simenstad (2000) and Simenstad and Cordell (2000) refer to as habitat “capacity”, refers to attributes that affect the ability of the habitat to support fish once they have accessed it (Simenstad and Cordell 2000). Examples of capacity attributes include predator population sizes, prey production, and prey availability (Table 1). In simple terms, opportunity attributes affect whether the capacity attributes of the habitats (e.g., food) are available to the fish. The concepts of opportunity and capacity are useful to consider since they can help guide decisions about what types of restoration are needed (e.g., fixing access, increasing capacity, or both). Table 1 lists some of the characteristics of habitat that I believe are important in recovery planning, the scale at which they operate, and whether they affect capacity, opportunity, or both. For example, high temperatures can prevent juvenile salmon from occupying a particular habitat (opportunity) while more moderate temperatures affect bioenergetics of the fish (capacity).

The function of any unit of habitat for juvenile salmon reflects how well all the attributes associated with that habitat affect population viability. From the perspective of an individual fish, the ultimate measure of function is how well occupation of that habitat helps the fish survive and successfully pass on its genetic material (i.e., fitness). There are a number of physiological and behavioral measures of how habitat is functioning that are related to how well the habitat supports: 1) feeding and growth, 2) avoidance of predators, 3) the physiological transition from freshwater-to-saltwater, and 4) migration to ocean feeding habitats (Simenstad et al. 1982; Simenstad and Cordell 2000).

Feeding and Growth. Juvenile salmon feed in all habitats that they occupy and use prey that originate from a wide diversity of sources including pelagic, benthic, and terrestrial sources (Fresh et al. 1981; Healey 1982; Simenstad et al. 1982; Brennan et al. 2004; Duffy et al. 2005). This abundant and diverse prey base helps supports high growth rates during use of nearshore ecosystems (Simenstad et al. 1982). Prey originate from a complex series of interactions that involve the acquisition, processing, and conversion of organic matter and nutrients into prey that can be eaten by juvenile salmon. Nearshore

food webs are noteworthy since they support abundant prey types that are especially important to small juvenile salmon and that depend upon internally derived organic matter (e.g., from diverse organic matter sources such as eelgrass from within nearshore ecosystems) (Sibert et al. 1977). A variety of factors affect feeding and growth including habitat characteristics, fish size, temperature, turbidity, tidal convergence zones, time of year, and climate (e.g., Simenstad et al. 1980; Fresh et al. 1981; Gregory 1994).

Refuge From Predation. Salmon are preyed on by a wide variety of fish, birds, and mammals during their nearshore residence (Parker 1971; Fresh 1997). Simenstad et al. (1982) suggested that some features of nearshore ecosystems may help reduce predation on juvenile salmon such as high levels of turbidity, presence of shallow water habitat, and abundant and diverse prey resources that sustain high growth rates and allow juvenile salmon to rapidly outgrow many of their predators. Several studies have found that turbidity can reduce visibility of salmon juveniles to predators (Gregory 1993; Gregory and Levings 1998).

Physiological transition. As juvenile salmon leave freshwater, they must physiologically change from an animal adapted to freshwater (parr) to one that is adapted to seawater (smolt). This means the fish must be able to osmoregulate in saltwater where conditions are clearly much different than what they left in freshwater. Smoltification is the term used to describe juvenile salmonids that are undergoing the various shifts in enzyme functions, behavior, appearance, and physiology as they transition to saltwater conditions (Wedemeyer et al. 1980; Clarke and Hirano 1995). Factors that influence the rate and timing of smoltification in salmon include species, fish size, photoperiod, lunar cycles, water temperature, and fish condition (Wedemeyer et al. 1980; Clarke and Hirano 1995; DeVries et al. 2004).

Part of the smoltification process occurs in nearshore ecosystems. It is possible that habitat use in nearshore ecosystems is driven, at least in part, by physiological needs, especially salinity regimes. Because salinity patterns are most complex in estuary/delta habitats, it seems reasonable to hypothesize that these habitats are critical for the physiological transition of some salmon species and

life history strategies (Schroder and Fresh 1992). However, the importance of particular habitats to smoltification will vary with species, size, and life history strategy. For example, chum salmon fry are able to almost immediately adjust to saltwater regardless of when and where they leave freshwater (Iwata 1982). The broad range in size and timing of estuarine entry by juvenile Chinook salmon suggests that there are differences in how each life history strategy smolts. In the case of migrant fry, smoltification and the osmoregulatory transition probably occurs in nearshore areas of Puget Sound since the fish pass rapidly through natal deltas. For yearlings, on the other hand, much of the parr to smolt transformation occurs in freshwater and Puget Sound because their residence time in the natal delta is very short.

Migratory pathway. Except for a few landlocked populations, salmon are a migratory animal over their entire life history (i.e., they migrate virtually continually from freshwater spawning areas to ocean feeding grounds and back again). Their survival depends upon their ability to occupy and move between freshwater, nearshore, and marine habitats. Thus, the integrity of nearshore habitats as a whole will have a profound effect upon the ability of salmon to journey to and from ocean feeding areas. Migratory behavior is complex (i.e., fish do not always take the most direct pathways) and varies between and within populations of the same species. For example, recovery of coded-wire tagged hatchery juvenile Chinook salmon suggests that most fish using nearshore ecosystems of Puget Sound are from Puget Sound (Duffy 2003; Brennan et al. 2004; Fresh et al. 2006). In addition, fish from many populations distribute widely upon entering Puget Sound and that some fish from outside the region (e.g., from Canada) also enter Puget Sound (Duffy 2003; Brennan et al. 2004; Fresh et al. 2006). Simenstad (2000) suggested that salmon recovery should emphasize corridors and linkages (i.e., connectivity) among habitats at all scales.

In general, our ability to quantitatively or conceptually link nearshore habitat characteristics to functions of that habitat for juvenile salmon (i.e., salmon performance) varies considerably with species and habitat type. This in part reflects the complexity of the salmon life cycle and the fact that the habitat requirements of salmon can vary broadly

as a function of many factors including specific location of that habitat, time of year, species, population, size of salmon, and life history strategy. This is different than many of the other species associated with nearshore ecosystems that have fairly specific habitat requirements such as substrate requirements for clams, kelps, and eelgrass. Thus, the types of substrate needed by salmon fry in an estuary will be different than the substrate types needed by larger fingerling sized salmon associated with a shoreline area.

I believe our ability to link nearshore habitat characteristics to functions of that habitat to support juvenile salmon (i.e., salmon performance) is strongest in natal deltas. We know that variability in habitat attributes in deltas, especially a number of features of small tidal channels, can be directly related to viability of salmon populations (e.g., Beamer et al. 2005). For example, Beamer et al. (2005) provided evidence that tidal channel networks that had high connectivity (closest to main migratory routes) and were the most accessible throughout the greatest tidal range were used by the greatest number of juvenile Chinook salmon. In contrast to the natal deltas, we have a poor understanding of how juvenile Chinook salmon use littoral habitats along the shoreline. We lack very basic information about what shoreline habitats are used, how long fish are there, how they get there (the role of hydrodynamic processes versus fish behavior), differences in habitat use among populations, and life history strategies, competition and predation, and other ecological issues. One exception is emerging information about the functions of pocket estuaries for Chinook salmon (Beamer et al. 2003; 2005). Pocket estuaries that are the most highly connected to the natal deltas (e.g., within one day's swim of the main delta) may be important habitats for the migrant fry strategy.

We also know much about the migration of juvenile chum salmon along shorelines, based primarily upon studies from Hood Canal (e.g., Salo et al. 1980; Bax 1983). We understand that there are strong linkages between juvenile chum salmon and specific prey communities associated with particular types of littoral habitats such as eelgrass beds (Simenstad and Wissmar 1985; Simenstad et al. 1988). As a result, the distribution and landscape configuration of eelgrass may have an important influence on performance of chum salmon fry. Similar to juvenile

Chinook salmon, chum salmon also make extensive use of non-natal deltas (Bax 1983). In contrast to Chinook salmon, however, our understanding of how juvenile chum salmon use natal deltas (e.g., factors affecting retention, residence time) is limited to only a few systems (e.g., Nanaimo and Fraser rivers).

Distribution, Status and Trends

Distribution. Along the West Coast of North America, Chinook salmon spawn primarily in large river systems such as the Sacramento River, Columbia River and Fraser River from the Salinas River in California to the Canadian Arctic (Healey 1991). Within Puget Sound, most Chinook salmon spawn in the 12 largest watersheds, although spawning also occurs in smaller tributaries in some areas such as south Puget Sound (Myers et al. 1998).

Chum salmon spawn on both sides of the Pacific Ocean (Salo 1991) in river systems of all sizes, ranging from large mainstem rivers (e.g., Fraser River and Skagit River) to unnamed, seasonal creeks; chum salmon occasionally spawn in tidally influenced portions of some streams. Within Puget Sound, chum salmon can be divided into three types (or clusters of populations) based upon timing of entry into freshwater and spawning. Although there is some overlap in spawning timing between the three groups, summer-run chum salmon spawn primarily in August and September, normal or fall-run chum spawn from October to December and winter or late-run chum spawn from January to March. Fall populations represent the great majority of the chum salmon spawning in Puget Sound.

Status and Trends. In 1991, Willa Nehlsen and colleagues published a comprehensive analysis of the status and trends of salmonid populations in the Pacific Northwest including the Puget Sound region (Nehlsen et al. 1991). They concluded that over 180 populations of salmon and steelhead had been extirpated in the Pacific Northwest (Washington, Oregon, and Idaho) and that much of the decline was due to loss and degradation of habitat. Their work represents a milestone in salmon conservation since it drew widespread attention to the condition of salmon populations and their habitats in this region.

Since that time, a number of assessments of the status and trends of salmon in Puget Sound have been produced (e.g., Stouder et al. 1997; Knudsen et al. 2000). Of these, the landmark Salmon and Steelhead Stock Inventories (SASSI) of 1992 and 2002 (available at <http://www.wdfw.wa.gov/SASSI>; WDFW 1993) were especially significant (Table 2). SASSI did not explicitly evaluate population viability but rather evaluated status primarily using metrics of abundance (e.g., numbers of returning

Table 2 Summary of the 1992 (WDFW 1993) and 2002 SASSI (www.wdfw.wa.gov) inventories of salmon and steelhead stocks in Puget Sound. Each value represents the number of stocks in that category. Steelhead trout are also included for comparison purposes.

Critical= Critical stocks are those that have declined to the point that the stocks are in danger of significant loss of genetic diversity, or are at risk of extinction; Depressed= A depressed stock is one whose production is below expected levels, based on available habitat and natural variation in survival rates, but above where permanent damage is likely; Unknown= Insufficient information to rate stock.

Species	Assessment ¹	1992	2002
Chinook salmon	Total	29	27
	Critical	4	5
	Depressed	10	14
	Healthy	8	4
	Unknown	7	3
	Not Rated	2	1
Chum salmon-normal	Total	45	45
	Critical	0	0
	Depressed	0	2
	Healthy	31	30
	Unknown	14	13
	Not Rated	0	0
Chum salmon- summer	Total	20	20
	Critical	1	2
	Depressed	1	5
	Healthy	3	4
	Unknown	1	1
	Not Rated	13	0
Chum salmon- winter	Total	2	2
	Healthy	2	2
Coho salmon	Total	45	45
	Critical	1	2
	Depressed	15	6
	Healthy	20	26
	Unknown	9	11
	Not Rated	0	0
Sockeye salmon	Total	9	9
	Critical	1	0
	Depressed	4	4
	Healthy	3	4
	Unknown	1	1
	Not Rated	0	0
Pink salmon	Total	13	13
	Critical	2	2
	Depressed	2	4
	Healthy	8	6
	Unknown	1	1
	Not Rated	0	0
Steelhead trout (summer and winter)	Total	60	60
	Critical	1	1
	Depressed	14	19
	Healthy	16	8
	Unknown	29	31
	Not Rated	0	1
	Extinct	0	0

adults and trends in harvest). The SASSI process rated stocks (a unit of salmon management similar to population) according to whether they were in critical condition, depressed, healthy, unknown (a determination could not be made reflecting either lack of appropriate information or disagreement among co-managers) or not rated. Within Puget Sound, 206 stocks of all species combined were identified in 1992 (note that an effort was not made to thoroughly identify extinct stocks). A new SASSI inventory for Washington State was published in 2003 (available at <http://www.wdfw.wa.gov/SASSI>) that altered a number of stock definitions and stock status ratings (Table 2). For example, in the 1992 inventory, about 1/3 of the Chinook salmon stocks were classified as critical or depressed while nearly 2/3 were rated as critical or depressed in the 2002 inventory (Table 2). The overall conclusions from the SASSI inventory were that there were critical and depressed stocks spread among the six salmonid species but that as a group Chinook salmon was in the worst condition.

Another important assessment of the status and trends of Puget Sound salmon occurred as part of the federal government's process to decide whether some populations qualified for protection under the ESA. Available information for each species was compiled and published in separate status review volumes with the exception of pink salmon which has not been considered for listing: Chinook salmon (Myers et al. 1998); sockeye salmon (Gustafson et al. 1997); coho salmon (Weitkamp et al. 1995); chum salmon (Johnson et al. 1997); and steelhead trout (Busby et al. 1996). The 22 populations of Chinook salmon spawning within Puget Sound were grouped into one ESU and listed as threatened in 1999 under ESA (Table 3); one population of summer chum salmon spawning in Hood Canal and a second spawning in the eastern Strait of Juan de Fuca (collectively comprised of eight spawning aggregations) were also grouped into an ESU that qualified for federal protection under the ESA.

Table 3 Summary of recent abundance levels of extant Puget Sound Chinook salmon populations from the Shared Strategy Salmon Recovery Plan

(2005). Values are geometric mean escapements for each time period.

Population	1986-1990	2000-2004
North, Middle Fork Nooksack	140	4,252
South Fork Nooksack	243	303
Lower Skagit	2,732	2,597
Upper Skagit	8,020	12,116
Upper Cascade	226	355
Lower Sauk	888	825
Upper Sauk	720	413
Suiattle	687	409
N. Fork Stillaguamish	699	1,176
S. Fork Stillaguamish	257	205
Skykomish	3,204	4,759
Snoqualamie	907	2,446
Sammamish	388	243
Cedar	733	412
Green/Duwamish	7,966	13,172
White	73	1,417
Puyallup	1,509	1,353
Nisqually	602	1,295
Skokomish	1,630	1,479
Mid Hood Canal	87	202
Dungeness	185	532
Elwha Natural Spawners	2,055	847
Elwha Natural+Hatchery Spawners	3,887	2,384

For each of these two threatened groups of salmon, additional information on population status is available in the recently released draft Salmon Recovery Plan (available at <http://www.sharedsalmonstrategy.org/plan/index.htm>). Also, (Ruckelshaus et al. (2006) provides the assessment of the historical population structure of the Puget Sound Chinook salmon ESU that served as a technical basis for the recovery plan and describes the substantial losses of spawning aggregations and life history types that have occurred in Puget Sound. Finally, the Hood Canal Summer Chum Salmon Conservation Initiative (available at <http://wdfw.wa.gov/fish/chum/chum.htm>) provides additional technical information on the status of Hood Canal summer chum salmon. Depending upon the population, average numbers of naturally spawning Chinook salmon in the Puget Sound ESU over the last 5 years (Table 3) has ranged between 1 and 10% of historical levels. For the period 1994-1998, productivity as measured by return-per-spawner was < 1.0 or below replacement levels for 1/3 of the populations. For the Hood Canal summer chum salmon ESU, 6 of the 8 extant stocks have exhibited decreasing long term trends in abundance with returns well below replacement levels.

Human Impacts on Juvenile Salmon in the Nearshore

Within Puget Sound, the abundance levels of many populations of Pacific salmon are at critically low levels (Nehlsen et al. 1991; Stouder et al. 1997; Knudsen et al. 2000). The concern about the downward trends in salmon populations coast-wide led to status reviews, severe restrictions on harvest of salmon originating from Puget Sound, and listings of several Puget Sound ESUs as threatened. Large-scale efforts to recover these populations are now underway throughout the region. A growing body of evidence demonstrates that restoring and protecting nearshore habitats must be a part of efforts to rebuild salmon runs throughout this region (Magnusson and Hilborn 2003; Greene and Beechie 2004; Bottom et al. 2005b; Greene et al. 2005).

Humans impact the functioning of nearshore habitats used by juvenile salmon in many ways. A number of recent evaluations of stressor effects on nearshore ecosystems and salmonids have been conducted recently and provide more detailed discussions of stressor effects in nearshore ecosystems (e.g., PSWQA 2002; PSAT 2005 (available at http://www.psat.wa.gov/Programs/salmon_recovery/); Shared Salmon Strategy Recovery Plan 2005. To help explore and understand how nearshore ecosystems of Puget Sound function, the Nearshore Science Team (NST) of Puget Sound Nearshore Ecosystem Restoration Project (PSNRP) developed a general conceptual model (Simenstad et al. 2006). The model can be used to explore how nearshore ecosystems respond to different types of anthropogenic actions and can help identify potential outcomes of an action, identify key uncertainties, and assess potential risks. The model proposes that anthropogenic changes (either positive or negative) will alter ecosystem processes which in turn will modify various attributes of habitat; changes in habitat will then have some effects on different ecosystem functions (e.g., capacity to support salmon, support of spawning by smelt and herring) (Figure 1). In the case of salmon, the functional responses of interest are growth and feeding, predator avoidance, physiological transition, and migration. How well nearshore habitats support these four functions will help define the ability of the habitat to support salmon population viability (i.e., abundance, productivity, spatial structure, and

diversity), which is the ultimate consideration (Figure 1).

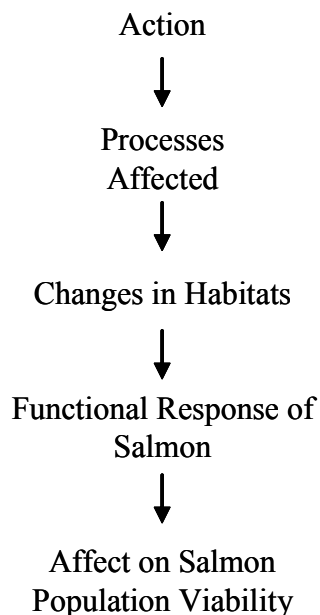
In order to apply the NST conceptual model to salmon, a “scenario” needs to be created that answers a number of questions including:

1. What species, life history strategy, and size class is considered?
2. What habitat type is being affected? At a minimum, this should involve asking whether a beach, embayment, delta, or rocky shore is affected.
3. Does the action affect opportunity, capacity or both?
4. Where in Puget Sound is the action occurring?
5. What type of action is being considered? This could be either a restoration action or a development or a combination of actions.

What constraints may exist such as geomorphologic context?

The reason these questions need to be addressed is that the salmon response to any action affecting nearshore ecosystems action will be spatially explicit, a function of the type of action, and a function of various characteristics of the fish (e.g., species and size). Table

Figure 1. General NST Conceptual model applied to salmon



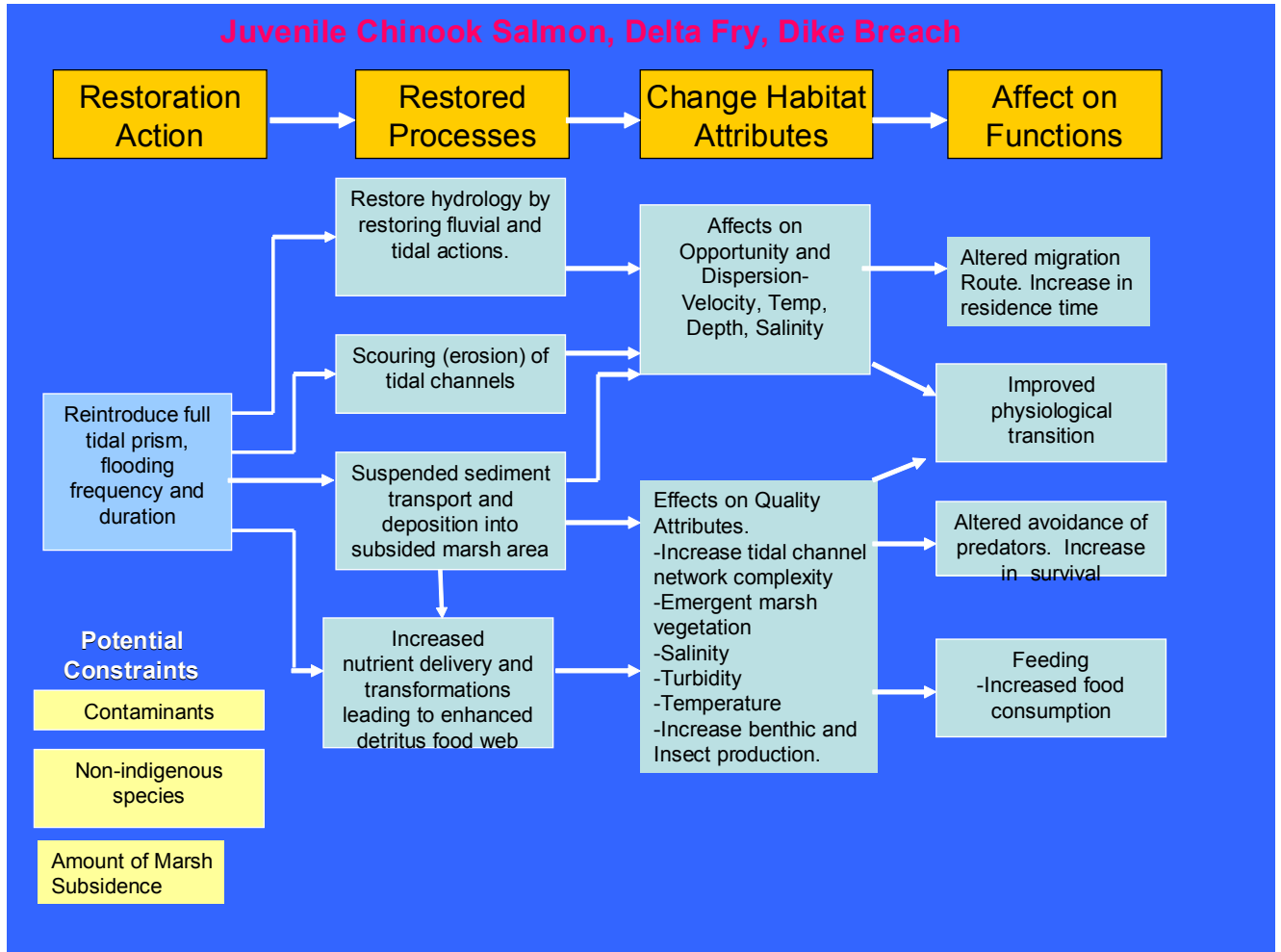
4 summarizes some of the ways that ecosystem processes, salmon habitat, and habitat function can be affected by different types of actions.

To illustrate how the conceptual model can be used to examine impacts of an action on juvenile salmon, I applied the model to one case history example (Figure 2): how the loss of tidal marsh channels in natal deltas affects Chinook salmon. As documented by Bortelson et al. (1980) and Collins et al. (2003), all deltas associated with the major Chinook salmon spawning streams in Puget Sound have been heavily altered. Many changes have occurred in freshwater that can affect delta systems, such as alterations in hydrology due to dam construction (e.g., Skagit and Snohomish rivers), watershed changes due to loss of forest cover, and water quality changes due to urbanization. However, I only considered the affects of restoring tidal hydrology by dike breaching/ dike removal (Figure 2). This action will affect several ecosystem processes including tidal hydrology, sediment movements, and cycling of organic matter. As a result of the dike breaching, new tidal channels will form, sediment will be deposited in the restoring marsh, and the development of a new plant community will result in more organic matter and food items being available. How new tidal channels develop (e.g., position, length and depth) will depend upon a number of factors such as where the dike is removed, how much of the dike is removed, size of the new wetland, and where in the estuary the new wetland is located. A number of habitat attributes will change. For example, opportunity will increase by adding new habitat that was previously unavailable. This will be further influenced by connectivity of the new channels. Habitat capacity will also increase as a result of more prey (such as insects) being produced as new vegetation grows. Assuming the delta is at carrying capacity, the addition of new tidal habitat will increase the number of delta fry that can rear in the estuary, residence time of fish in the delta, and growth of fish associated with this life history strategy. Ultimately, the addition of the new tidal channels will increase population viability by altering the distribution and composition of life history strategies and increasing spatial structure by creating new habitat, thereby spreading the population out in space and time. Productivity will also be strongly affected because more salmon of one of the dominant life history strategies will

Table 4 Functional response of salmon to several types of actions in nearshore ecosystems

Actions or Stressors	Habitats Affected (based on NST typology)	Processes Altered	Habitat Effects	Functional Response of Salmon
Shoreline Armoring (riprap, bulkheads)	Beaches	a. erosion/sediment transport (backshore, intertidal and alongshore)	<p><u>Physical/Chemical</u></p> <ul style="list-style-type: none"> a. altered beach sediment size/type b. decreased sediment abundance c. increased wave energy d. water quality changes from flow alteration, accumulation of drift material (including macroalgae blooms) <p><u>Biological</u></p> <ul style="list-style-type: none"> a. altered plant/animal assemblages (loss of eelgrass/copepods) b. beach scouring and/or lowering c. loss of shallow nearshore d. loss of connectivity e. altered shoreline hydrodynamics/drift (groins, etc..) 	<ul style="list-style-type: none"> a. reduced prey density causing a decline in growth b. increased predation and lower survival c. altered migration
Overwater Structures (stairs, docks, marinas)	Beaches, Embayments	a. erosion/sediment transport	<p><u>Physical/Chemical</u></p> <ul style="list-style-type: none"> a. altered beach sediment size/type b. light limitation/alteration c. water quality declines from flow alteration, accumulation of drift material (including macroalgae blooms) <p><u>Biological</u></p> <ul style="list-style-type: none"> a. loss of eelgrass 	<ul style="list-style-type: none"> a. reduced prey b. increased predation, loss of refuge habitat c. altered migration behavior
Stormwater Wastewater	Beaches, Embayments, Deltas, Rocky shores	<ul style="list-style-type: none"> a. nutrient input b. freshwater input 	<p><u>Physical/Chemical</u></p> <ul style="list-style-type: none"> a. low dissolved oxygen b. contaminant loading c. nutrient loading d. physical scouring from increased runoff e. increased shoreline erosion from poor stormwater conveyance/maintenance f. alteration of beach hydrodynamics <p><u>Biological</u></p> <ul style="list-style-type: none"> a. altered plant/animal assemblages (including macroalgae blooms) b. eelgrass loss. c. forcing of habitat shifts due to blooms (slowing of water, accumulation of nutrients, etc) 	<ul style="list-style-type: none"> a. increased injury risk (lesions, tumors) b. reduced prey c. reduced habitat
Landfill (below the high water line)	Beaches, Embayments, Deltas	<ul style="list-style-type: none"> a. tidal exchange b. erosion/sediment transport 	<p><u>Physical/Chemical</u></p> <ul style="list-style-type: none"> a. delta and lagoon loss b. altered beach sediment size/type c. decreased sediment abundance d. increased wave energy <p><u>Biological</u></p> <ul style="list-style-type: none"> a. altered plant/animal assemblages b. loss of shallow nearshore corridor c. loss of riparian d. beach scouring and/or lowering e. loss of connectivity 	<ul style="list-style-type: none"> a. reduced prey b. osmoregulation (due to delta/lagoon loss) c. increased predation
Riparian Loss	Beaches, Embayments, Deltas, Rocky shores	<ul style="list-style-type: none"> a. nutrient input b. erosion/sediment transport 	<p><u>Physical/Chemical</u></p> <ul style="list-style-type: none"> a. increased temperature b. organic input (food web) 	<ul style="list-style-type: none"> a. reduced prey b. increased predation

Figure 2 NST Conceptual Model applied to affects of juvenile Chinook salmon (delta fry strategy) resulting from a dike breach in a natal delta.



Gaps/Critical Uncertainties in our Empirical Knowledge

The following are what I believe are important gaps in our knowledge about salmon in nearshore ecosystems.

1. How do juvenile Chinook salmon use the habitats associated with the shoreline areas of Puget Sound?
2. What are the linkages between habitat use and population viability parameters (e.g., productivity)?
3. How do juvenile salmon move around in Puget Sound and how does this differ between populations?
4. Are there differences in how different populations, different races (e.g., summer vs fall chum salmon) and different life history strategies use shoreline/littoral habitats?
5. What factors affect the residence time of juvenile chum salmon in deltas?
6. How do hydrodynamic processes affect distribution and movements of juvenile salmon within Puget Sound?
7. What is the capacity of nearshore habitats to support salmon?

survive which in turn will affect abundance of returning adults (Beamer et al. 2005).

Literature Cited

Bax, N. 1983. Early marine mortality of marked juvenile chum salmon (*Oncorhynchus keta*) released into Hood Canal, Puget Sound, Washington, in 1980. *Canadian Journal of Fisheries and Aquatic Sciences* 40:426-435.

Beamer, E., R. Henderson, A. McBride, and K.W. Wolf. 2003. The importance of non-natal pocket estuaries in Skagit Bay to wild Chinook salmon: an emerging priority for restoration. Skagit River System Cooperative, Research Department, La Connor, WA 10 p.

Beamer, E., A. McBride, C. Greene, R. Henderson, G. Hood, K. Wolf, K. Larsen, C. Rice, and K. L. Fresh. 2005. Delta and nearshore restoration for the recovery of wild Skagit River Chinook salmon: linking estuary restoration to wild Chinook salmon populations. Supplement to Skagit Chinook Recovery Plan, Skagit River System Cooperative, La Conner, Washington.

Beechie, T.J., E. Buhle, M. H. Ruckelshaus, A. H. Fullerton, and L. Holsinger. 2006. Hydrologic regime and the conservation of salmon life history diversity. *Biological Conservation* 130:360-372.

Bortelson, G.C., M.J. Chrzastowski, and A.K. Helgerson. 1980. Historical changes of shoreline and wetlands at eleven major deltas in the Puget Sound region, Washington. Atlas HA-617, Department of Interior, U.S. Geological Survey.

Bottom, D.L., K.K. Jones, T.J. Cornwell, A. Gray, and C. A. Simenstad. 2005a. Patterns of Chinook salmon migration and residency in the Salmon River estuary (Oregon). *Estuarine, Coastal and Shelf Science* 64:79-93.

Bottom, D. L., C. A. Simenstad, J. Burke, A. M. Baptista, D. A. Jay, K. K. Jones, E. Casillas, and M. H. Schiewe. 2005b. Salmon at river's end: The role of the estuary in the decline and recovery of Columbia River salmon. U.S. Dept. of Commerce, NOAA Tech. Memorandum, NMFS-NWFSC-68, 246 p.

Brennan, J. S., K. F. Higgins, J. R. Cordell, and L. A. Stamatiou. 2004. Juvenile salmon composition, timing distribution, and diet in marine nearshore waters of

-
- central Puget Sound in 2001-2002. King County, Department of Natural Resources and Parks, Seattle WA. 164 p.
- Busby, P. J., T. C. Wainwright, G. J. Bryant, L. J. Lierheimer, R. S. Waples, F. W. Waknitz, and I. V. Lagomarsino. 1996. Status review of west coast steelhead from Washington, Idaho, and California. U.S. Dept. of Commerce, NOAA Tech. Memorandum, NMFS- NWFSC-27, 261 p.
- Carl, C. M., and M.C. Healey. 1984. Differences in enzyme frequency and body morphology among three juvenile life history types of Chinook salmon (*Oncorhynchus tshawytscha*) in the Nanaimo River, British Columbia. Canadian Journal of Fisheries and Aquatic Sciences 41:1070-1077.
- Clarke, W. C., and T. Hirano. 1995. Osmoregulation, pp 319-377. *In*: C. Groot, L. Margolis, and W. C. Clarke (eds). Physiological ecology of Pacific salmon. UBC Press, Vancouver.
- Collins, B.D., D.R. Montgomery, and A.J. Sheikh. 2003. Reconstructing the historical riverine landscape of the Puget Lowland, pp. 79-128. *In*: D. R. Montgomery, S. B. Bolton, D. B. Booth, and L. Wall (eds). Restoration of Puget Sound Rivers. University of Washington Press, Seattle and London.
- Congleton, J. L., S. K. Davis, and S. R. Foley. 1981. Distribution, abundance and outmigration timing of chum and Chinook salmon fry in the Skagit salt marsh, pp. 153-163. *In*: E.L. Brannon and E. O. Salo (eds.). Proceedings of the Salmon and Trout Migratory Behavior Symposium, School of Fisheries, University of Washington, Seattle. 309 p.
- Cucherousset, J., D. Ombréance, K. Charles, F. Marchand, and J.L. Bagliniere. 2005. A continuum of life history tactics in a brown trout (*Salmo trutta*) population. Canadian Journal of Fisheries and Aquatic Sciences 62:1600-1610.
- DeVries, P., F. Goetz, K. L. Fresh, and D. E. Seiler. 2004. Evidence of a lunar gravitation cue on timing of estuarine entry by Pacific salmon smolts. Transactions of the American Fisheries Society 133:1379-1395.
- Duffy, E. J. 2003. Early marine distribution and trophic interactions of juvenile salmon in Puget Sound. Thesis, University of Washington, Seattle, WA
- Duffy, E.J., D.A. Beauchamp, and R. M. Buckley. 2005. Early marine life history of juvenile Pacific salmon in two regions of Puget Sound. Estuarine, Coastal, and Shelf Science 64:94-107.
- Fresh, K.L. 1979. Distribution and abundance of fishes occurring in the nearshore surface waters of northern Puget Sound, Washington. M.S. Thesis, University of Washington, Seattle.
- Fresh, K. L. 1997. The role of competition and predation in the decline of Pacific salmon and steelhead, pp. 245-276. *In*: D.J. Stouder, P. Bisson, and R. Naiman (eds.), Pacific Salmon and their Ecosystems. Status and Future Options. Chapman and Hall, New York, New York.
- Fresh, K.L., R.D. Cardwell, and R R. Koons. 1981. Food habitats of Pacific salmon, baitfish, and their potential competitors and predators in the marine waters of Washington, August 1978 to September 1979. State of Washington, Department of Fisheries, Progress Report No. 145, Olympia, Washington.
- Fresh, K. L., D. Rabin, C. A. Simenstad, E.O. Salo, K. Garrison, and L. Matheson. 1979. Fish ecology studies in the Nisqually Reach area of southern Puget Sound, Washington. University of Washington, Fisheries Research Institute, FRI-UW-7904, Seattle.
- Fresh, K. L., D. J. Small, H. Kim, C. Waldbillig, M. Mizell, M. I. Carr, and L. Stamatiou. 2006. Juvenile salmon use of Sinclair Inlet, Washington in 2001 and 2002. State of Washington, Department of Fish and Wildlife, Olympia, Washington, Report FRT-05-06, 161 p.
- Gharrett, A. J., and W. W. Smoker. 1993. Genetic components in life-history traits contribute to population structure, pp. 197-201. *In*: J. G. Cloud and G. Thorgaard (eds.), Conservation of Salmonid Fishes. Plenum Press, London.
- Gray, A., C. A. Simenstad, D. L. Bottom, and T. J. Cornwell. 2002. Contrasting functional performance
-

- of juvenile salmon habitat in recovering wetlands of the Salmon River Estuary, Oregon, U.S.A. *Restoration Ecology* 10:514-526.
- Greene, C. M., and T. J. Beechie. 2004. Consequences of potential density-dependent mechanisms on recovery of ocean-type Chinook salmon (*Oncorhynchus tshawytscha*). *Canadian Journal of Fisheries and Aquatic Sciences* 61:590-602.
- Greene, C. M., D. Jensen, G. R. Pess, E. M. Beamer, and E. A. Steel. 2005. Effects of environmental conditions during stream, estuary, and ocean residency on Chinook salmon return rates in the Skagit River, WA. *Transactions of the American Fisheries Society* 134:1562-1581.
- Gregory, R. S. 1993. The effect of turbidity on the predator avoidance behavior of juvenile Chinook salmon (*Oncorhynchus tshawytscha*). *Canadian Journal of Fisheries and Aquatic Sciences* 50:241-246.
- Gregory, R. S. 1994. The influence of ontogeny, perceived risk of predation, and visual ability on the foraging behavior of juvenile Chinook salmon, pp. 271-284. *In*: D. J. Stouder, K. L. Fresh, and R. J. Feller (eds). *Theory and application in fish feeding ecology*. Belle Baruch Library in Marine Science Number 18. University of South Carolina Press, Columbia.
- Gregory, R. S. and C. Levings. 1998. Turbidity reduces predation on migrating juvenile Pacific salmon. *Transactions of the American Fisheries Society* 127:275-285.
- Gustafson, R. G., T. C. Wainwright, G. A. Winans, F. W. Waknitz, L. T. Parker, and R. S. Waples. 1997. Status review of sockeye salmon from Washington and Oregon. U.S. Dept. of Commerce, NOAA Tech. Memorandum, NMFS-NWFSC-33, 282 p.
- Hansen, L. P., and B. Jonsson. 1991. Evidence of a genetic component in the seasonal return pattern of Atlantic salmon, *Salmo salar*. L. *Journal of Fish Biology* 38:21-258.
- Hanski, I., and M. Gilpin. 1996. *Metapopulation biology: Ecology, genetics, and evolution*. Academic Press, San Diego.
- Healey, M.C. 1979. Detritus and juvenile salmon production in the Nanaimo estuary. I: Production and feeding rates of juvenile chum salmon (*Oncorhynchus keta*). *Journal of the Fisheries Research Board of Canada* 36:488-496.
- Healey, M.C. 1980. Utilization of the Nanaimo River estuary by juvenile Chinook salmon, *Oncorhynchus tshawytscha*. *U. S. Fisheries Bulletin* 77:653-668.
- Healey, M. C. 1982. Juvenile Pacific salmon in estuaries: the life support system, pp. 315-341. *In*: V.S. Kennedy (ed). *Estuarine Comparisons*. Academic Press, New York.
- Healey, M.C. 1991. Life-history of Chinook salmon (*Oncorhynchus tshawytscha*), pp. 311-393. *In*: C. Groot and L. Margolis (eds.), *Pacific salmon life histories*. UBC Press, Vancouver.
- Healey, M.C., and W.R. Heard. 1984. Inter- and intra-population variation in the fecundity of Chinook salmon (*Oncorhynchus tshawytscha*) and its relevance to life history theory. *Canadian Journal of Fisheries and Aquatic Science* 41:476-483.
- Hood, W. G. 2002. Application of landscape allometry to restoration of tidal channels. *Restoration Ecology* 10:213-222.
- Iwata, M. 1982. Transition of chum salmon fry into salt water, pp. 204-207. *In*: E.L. Brannon and E. O. Salo (eds). *Proceedings of the Salmon and Trout Migratory Behavior Symposium*, School of Fisheries, University of Washington, Seattle. 309 p.
- Johnson, O. W., W. S. Grant, R. G. Kope, K. Neely, F. W. Waknitz, and R. S. Waples. 1997. Status review of chum salmon from Washington, Idaho, Oregon, and California. U.S. Dept. of Commerce, NOAA Tech. Memorandum, NMFS-NWFSC-32, 280 p.
- Knudsen, E. E., C.R. Steward, D.D. MacDonald, J.E. Williams, and D.W. Reiser (eds.). 2000. *Sustainable fisheries management: Pacific salmon*. CRC Press (Lewis Publishers), Boca Raton.

- Levings, C. D., K. Conlin, and B. Raymond. 1991. Intertidal habitats used by juvenile Chinook salmon (*Oncorhynchus tshawytscha*) rearing in the North Arm of the Fraser River estuary. *Marine Pollution Bulletin* 22:20-26.
- Levings, C. D., C.D. McAllister, and B.D. Chang. 1986. Differential use of the Campbell River estuary, British Columbia, by wild and hatchery-reared juvenile Chinook salmon (*Oncorhynchus tshawytscha*). *Canadian Journal of Fisheries and Aquatic Sciences* 43:1386-1397.
- Levy, D. A. and T.G. Northcote. 1982. Juvenile salmon residency in a marsh area of the Fraser River Estuary. *Canadian Journal of Fisheries and Aquatic Sciences* 39:270-276.
- MacDonald, J.S., I.K. Birtwell, and G.M. Kruzynski. 1987. Food and habitat utilization by juvenile salmonids in the Campbell River estuary. *Canadian Journal of Fisheries and Aquatic Sciences* 44:1233-1246.
- MacDonald, J.S., C.D. Levings, C.D. McAllister, U.H.M. Fagerlund, and J.R. McBride. 1988. A field experiment to test the importance of estuaries for Chinook salmon (*Oncorhynchus tshawytscha*) survival: short-term results. *Canadian Journal of Fisheries and Aquatic Sciences* 45:1366-1377.
- Magnusson, A., and R. Hilborn. 2003. Estuarine survival rates of coho (*Oncorhynchus kisutch*) and Chinook salmon (*Oncorhynchus tshawytscha*) released from hatcheries on the U.S. Pacific Coast. *Estuaries* 26 (4B):1094-1103.
- McClure, M. M., E. E. Holmes, B. L. Sanderson, and C. E. Jordan. 2003. A large-scale, multi-species status assessment: Anadromous salmonids in the Columbia River basin. *Ecological Applications* 13:964-989.
- McElhany, P., M.H. Ruckelhaus, M.J. Ford, T.C. Wainwright, and E.P. Bjorkstedt. 2000. Viable salmon populations and the recovery of evolutionary significant units. U.S. Department of Commerce, NOAA Technical Memorandum, NMFS-NWFSX-42, Seattle 156 p.
- Miller, B.A., and S. Sadro. 2003. Residence time and seasonal movements of juvenile coho salmon in the ecotone and lower estuary of Winchester Creek, South Slough, Oregon. *Transactions of the American Fisheries Society*. 132:546-559.
- Miller, J.A., and C.A. Simenstad. 1997. A comparative assessment of a natural and created estuarine slough as rearing habitat for juvenile Chinook and coho salmon. *Estuaries* 20:792-806.
- Mortenson, D., A. Wertheimer, S. Taylor, and J. Landingham. 2000. The relationship between early marine growth of pink salmon, *Oncorhynchus gorbuscha*, and marine water temperature, secondary production, and survival to adulthood. *Fishery Bulletin* 98:319-335.
- Myers, J. M., R. G. Kope, G. J. Bryant, D. Teel, L. J. Lierheimer, T. C. Wainwright, W. S. Grand, F. W. Waknitz, K. Neely, S. T. Lindley, and R. S. Waples. 1998. Status review of Chinook salmon from Washington, Idaho, Oregon, and California. U.S. Dept. of Commerce, NOAA Tech. Memorandum, NMFS-NWFSC-35.
- Nehlsen, W., J.E. Williams, and J.A. Lichatowich. 1991. Pacific salmon at the crossroads: stocks at risk from California, Oregon, Idaho, and Washington. *Fisheries* 16:4-21.
- NRC (National Research Council). 1996. Upstream salmon and society in the Pacific Northwest. National Research Council. National Academy Press, Washington, D.C.
- Parker, R.R. 1971. Size selective predation among juvenile salmonid fishes in a British Columbia Inlet. *Journal of the Fisheries Research Board of Canada* 28:1503-1510.
- PSAT (Puget Sound Action Team). 2005. Regional nearshore and marine aspects of salmon recovery planning. Puget Sound Action Team, Olympia (available at www.psat.wa.gov/Programs/salmon_recovery/)
- PSWQA (Puget Sound Water Quality Action Team). 2002. Puget Sound Update: Eighth report of the Puget Sound ambient monitoring program. Puget Sound Water Quality Action Team, Olympia, Washington.
- Reimers, P. E. 1973. The length of residence of juvenile fall Chinook salmon in Sixes River. *Oregon Research Papers Fish Commission Oregon* 4(2). 40 p.

-
- Quinn, T. P., and M. J. Unwin. 1993. Life history patterns of New Zealand Chinook salmon (*Oncorhynchus tshawytscha*) populations. *Canadian Journal of Fisheries and Aquatic Sciences* 50: 1414-1421.
- Quinn, T. P., M. J. Unwin, and M. T. Kinnison. 2000. Evolution of temporal isolation in the wild: Genetic divergence in timing of migration and breeding by introduced Chinook salmon populations. *Evolution* 54:1372-1385.
- Rich, W. 1939. Local populations and migration in relation to the conservation of Pacific salmon in the western states and Alaska. *American Association for the Advancement of Science Publication* 8:45-50.
- Ruckelshaus, M. H., K. P. Currens, W. H. Graeber, R. R. Fuerstenberg, K. Rawson, N. J. Sands, and J. B. Scott. 2006. Independent populations of Chinook salmon in Puget Sound. U.S. Dept. Commerce, NOAA Tech. Memorandum, NMFS-NWFSC-78. Available at <http://www.nwfsc.noaa.gov/publications/index.cfm>
- Salo, E. O. 1991. Life-history of chum salmon (*Oncorhynchus keta*), pp. 231-309. *In*: C. Groot and L. Margolis (eds.) *Pacific salmon life histories*. UBC Press, Vancouver.
- Salo, E. O., N. J. Bax, T. E. Prinslow, C. J. Whitmus, B.P. Snyder, and C.A. Simenstad. 1980. Studies of the outmigration of juvenile chum salmon Hood Canal, Washington with emphasis on the effects of construction of naval installations. University of Washington, Fisheries Research Institute, Final Report, FRI-UW-8006. 159 p.
- Schroder, S.L. and Fresh, K.L. (eds). 1992. Results of the Grays Harbor coho survival investigations, 1987-1990. Washington Department of Fisheries, Tech. Rep. No.118. 413 p.
- Shared Salmon Strategy. 2005. Draft Puget Sound salmon recovery plan. Shared Salmon Strategy. Seattle. Available at: <http://www.sharedsalmonstrategy.org/plan/index.html>
- Shreffler, D.K., C.A. Simenstad, and R.M. Thom. 1990. Temporary residence by juvenile salmon of a restored estuarine wetland. *Canadian Journal of Fisheries and Aquatic Sciences* 47:2079-2084.
- Sibert, J., T. J. Brown, M. C. Healey, B.A. Kask, and R. J. Naiman. 1977. Detritus based food webs: Exploitation by juvenile chum salmon (*Oncorhynchus keta*). *Science* 196:649-650.
- Simenstad, C.A. 2000. Commencement Bay aquatic ecosystem assessment. Ecosystem-scale restoration for juvenile salmon recovery. University of Washington, School of Fisheries, Seattle FUW-2003. 25 p.
- Simenstad, C.A. and J.R. Cordell. 2000. Ecological assessment criteria for restoring anadromous salmon habitat in Pacific Northwest estuaries. *Ecological Engineering* 15:283-302.
- Simenstad, C.A., K.L. Fresh, and E.O. Salo. 1982. The role of Puget Sound and Washington coastal estuaries in the life history of Pacific salmon: an unappreciated function, pp. 343-364. *In*: V.S. Kennedy (ed). *Estuarine Comparisons*. Academic Press, New York.
- Simenstad, C.A., W.G. Hood, R. M. Thom, D. A. Levy, and D.L. Bottom. 2000. Landscape structure and scale constraints on restoring estuarine wetlands for Pacific Coast juvenile fishes, pp. 597-630. *In*: M.P. Weinstein and D.A. Kreeger (eds.), *Concepts and controversies in tidal marsh ecology*. Kluwer Academic Publications, Dordrecht.
- Simenstad, C. A., W. J. Kinney, S. S. Parker, E. O. Salo, J. R. Cordell, and H. Buechner. 1980. Prey community structures and trophic ecology of outmigrating juvenile chum and pink salmon in Hood Canal, Washington: A synthesis of three years' studies, 1977-1979. Final Rep. to Washington Department of Fisheries, University of Washington, Fisheries Research Institute, Seattle. FRI-UW-8026. 113 p.
- Simenstad, C.A., M. Logsdon, K. Fresh, H. Shipman, M. Dethier, and J. Newton. 2006. Conceptual model for assessing restoration of Puget Sound nearshore ecosystems. Puget Sound Nearshore Partnership Report No. 2006-03. Published by Washington Sea Grant Program, University of Washington, Seattle, Washington. Available at <http://www.pugetsoundnearshore.org>
- Simenstad, C.A., and R. C. Wissmar. 1985. +13C evidence of the origins and fates of organic carbon in estuaries and nearshore food webs. *Marine Ecology Progress Series* 22:141-152.

-
- Simenstad, C.A., J. Cordell, R.C. Wissmar, K.L. Fresh, S.L. Schroder, M.I. Carr, G. Sanborn, and M. Burg. 1988. Assemblage structure, microhabitat distribution, and food web linkages of epibenthic crustaceans in Padilla Bay National Estuarine Research Reserve. NOAA Technical Report Series OCRM/MEMO, FRI-UW-8813. 60 p.
- Stober, Q.J., and E.O. Salo. 1973. Ecological studies of the proposed Kiket Island nuclear power site. University of Washington, Fisheries Research Institute, Seattle. FRI-UW-7304.
- Stouder, D.J., P. Bisson, and R. Naiman (eds.). 1997. Pacific Salmon and their Ecosystems. Status and Future Options. Chapman and Hall, New York, New York.
- Taylor, E.B. 1990. Environmental correlates of life-history variation in juvenile Chinook salmon, *Oncorhynchus tshawytscha* (Walbaum). *Journal of Fish Biology* 37:1-17.
- Thom, R. M., C. A. Simenstad, J. R. Cordell, and E. O. Salo. 1989. Fish and their epibenthic prey in a marina and adjacent mudflats and eelgrass meadow in a small estuarine bay. FRI-UW-8901, Rep. for The Port of Bellingham, University of Washington, Fisheries Research Institute, Seattle. 27 p.
- Turner, M.G. 1989. Landscape ecosystem: the effect of pattern on process. *Annual Review of Ecology and Systematics*. 20:171-197.
- Waples, R. S. 1995. Evolutionarily significant units and the conservation of biological diversity under the Endangered Species Act. *American Fisheries Society Symposium* 17:8-27.
- Waples, R. S., R. G. Gustafson, L. A. Weitkamp, and others. 2001. Characterizing diversity in salmon from the Pacific Northwest. *Journal of Fish Biology* 59 (Supplement A):1-31.
- Waples, R. S., D. J. Teel, J. M. Myers, and A. R. Marshall. 2004. Life-history divergence in Chinook salmon: Historic contingency and parallel evolution. *Evolution* 58:386-403.
- Wedemeyer, G. A., R. L. Saunders, and W. C. Clarke. 1980. Environmental factors affecting smoltification and early marine survival of anadromous salmonids. *Marine Fisheries Review* 42:1-14.
- WDFW (Washington Department of Fish and Wildlife). 1993. 1992 Salmon and steelhead stock assessment inventory. Washington Department of Fish and Wildlife, Olympia, Washington.
- Weitkamp, L. A., T. C. Wainwright, G. J. Bryant, G. B. Milner, D. J. Teel, R. G. Kope, R. S. Waples. 1995. Status review of coho salmon from Washington, Oregon, and California. U.S. Dept. of Commerce, NOAA Tech. Memorandum, NMFS-NWFSC-24, 258 p.
- Wissmar, R., and C.A. Simenstad. 1998. Variability of riverine and estuarine ecosystem productivity for supporting Pacific salmon, pp 253-301. *In: Change in Pacific Northwest Coastal Ecosystems* G.R. McMurray and R. J. Bailey (eds). NOAA Coastal Ocean Program, Decision Analysis Series No. 11.